

Weddings at The Riverhouse

NESTLED IN THE HEART OF CLARKE QUAY, THE HISTORIC LANDMARK MAKES AN ICONIC WEDDING DESTINATION THAT IS PERFECT FOR THE VISIONARY BRIDE & GROOM.

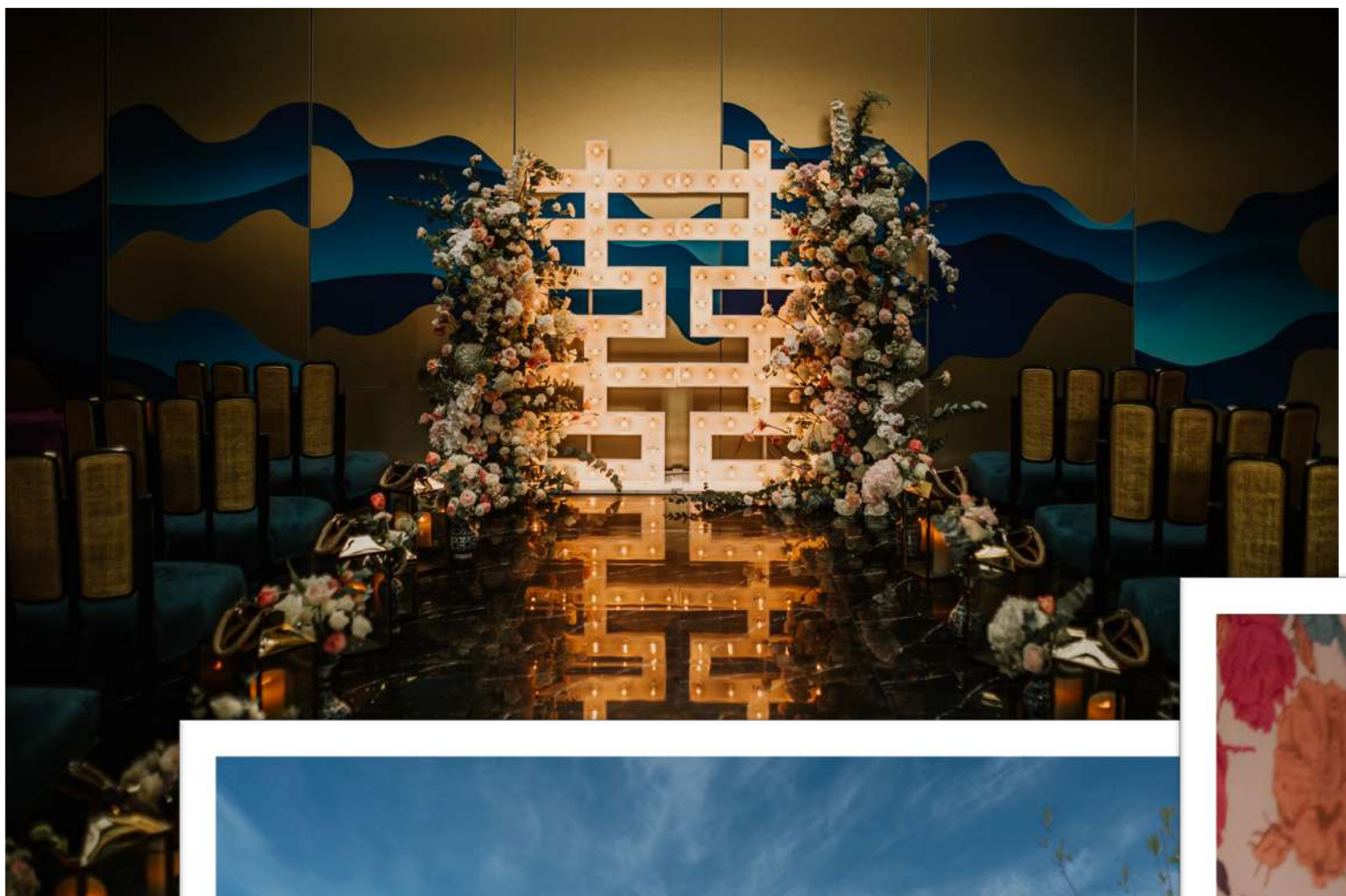
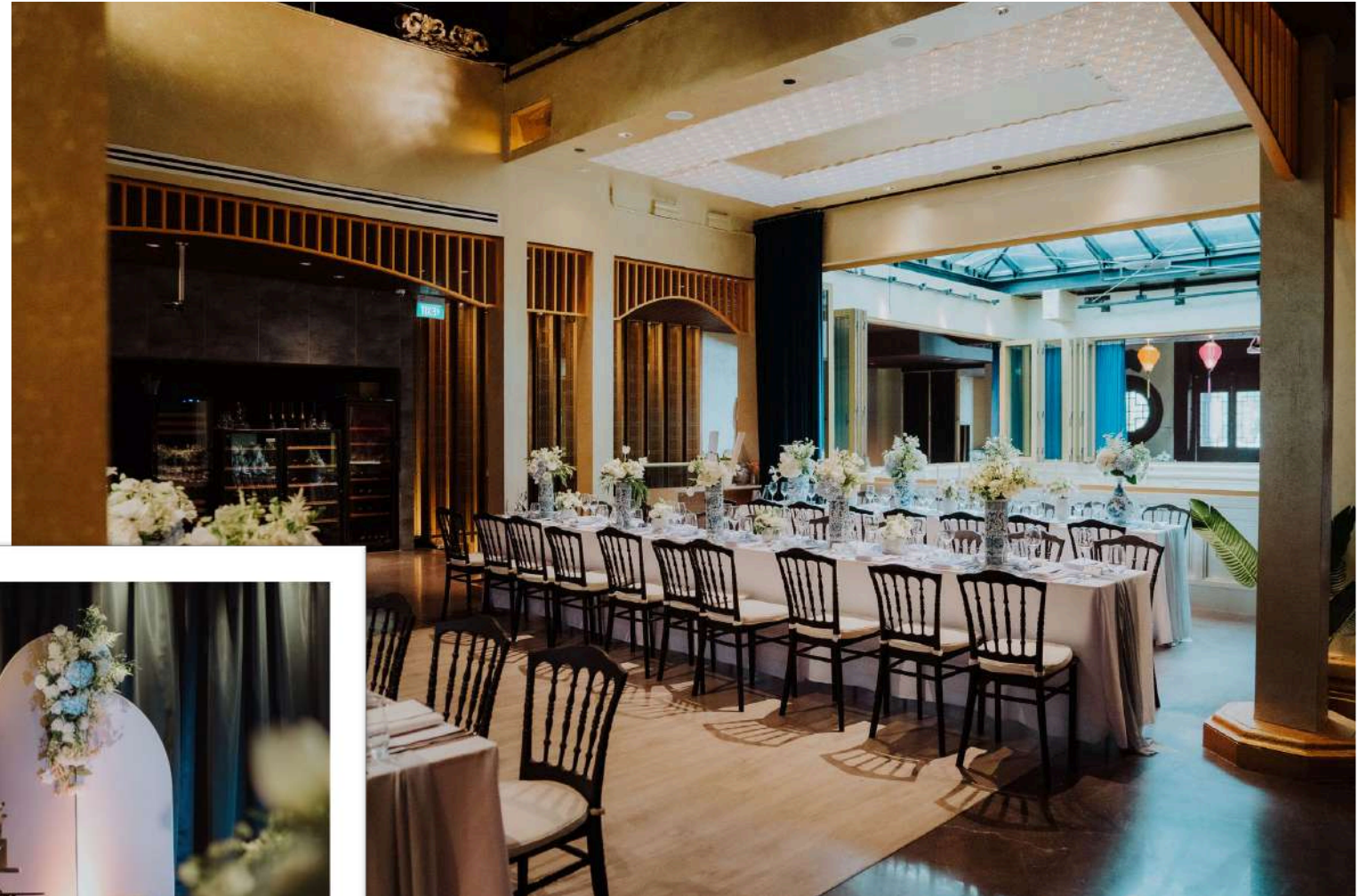
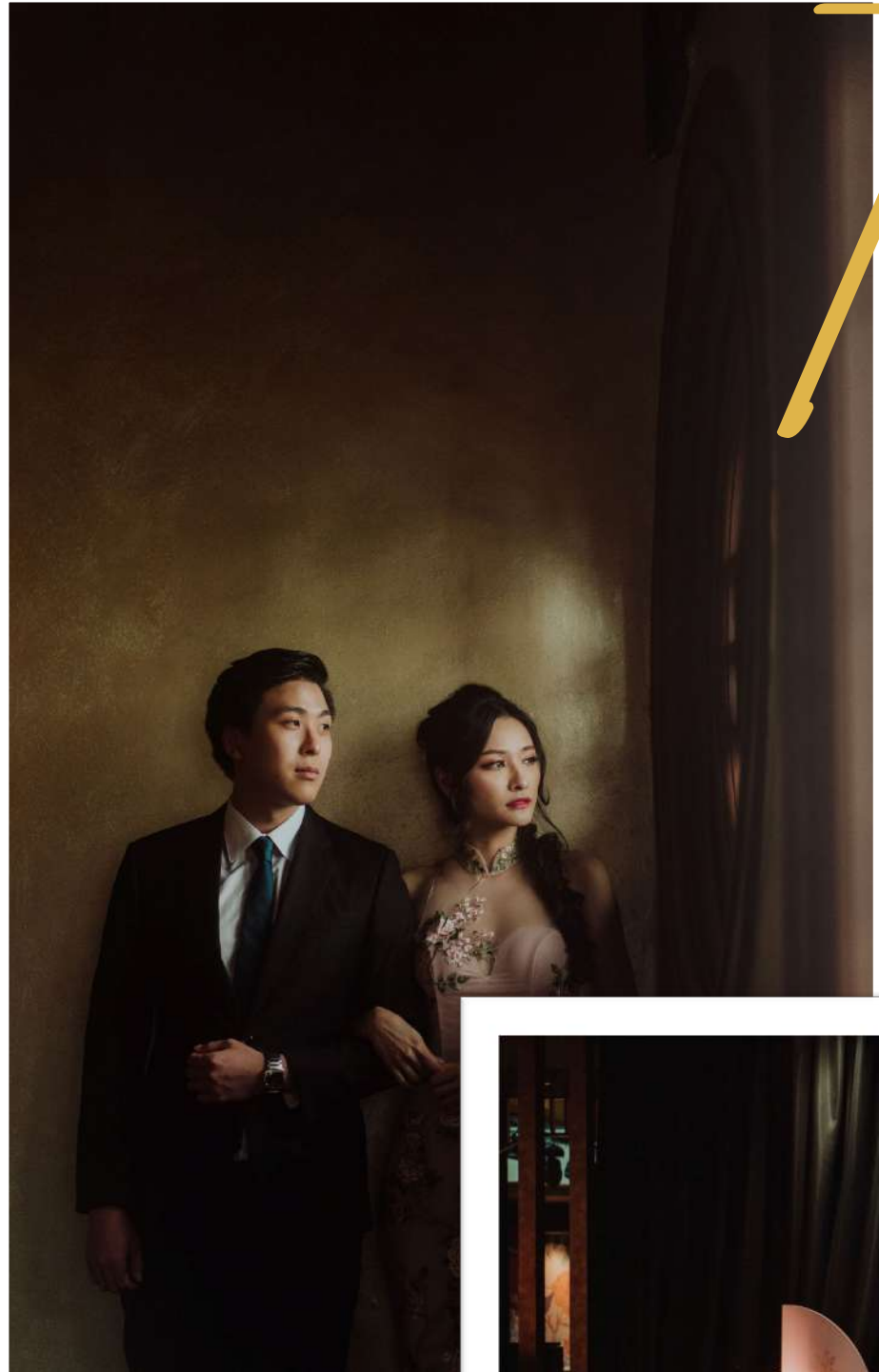
WITH ITS BOLD INTERIOR AND HIGH CEILING, THE RIVERHOUSE IS TRULY A ONE-OF-A-KIND VENUE BEFITTING OF THE WEDDING OF YOUR DREAMS.

3A RIVER VALLEY ROAD
SINGAPORE 179020



Photographer: @dean_creation

The riverhouse





solemnisation
**Al-Fresco
Courtyard**

THE COSY OPEN-AIR COURTYARD THAT IS SITUATED ALONG THE SINGAPORE RIVER PROVIDES A UNIQUE BACKDROP FOR YOUR PRE-WEDDING COCKTAIL RECEPTION AND SOLEMNISATION.



Photographer: @wemerryground



dining

Mimi Restaurant

WITH ITS DISTINCTIVELY SEDUCTIVE CHINESE ARCHITECTURE,
MIMI PAYS HOMAGE TO EASTERN INFLUENCES WITH TOP
NOTCH CHINESE-FUSION CUISINE.

GUESTS CAN EXPECT AN IMMERSIVE EXPERIENCE AS THEY
MARVEL AT THE SULTRY DÉCOR THAT AMALGAMATES
TRADITION AND MODERNITY.



Photographer: @wemerryground



after parties

Hush by Mimi

(Formerly Club Yang)

TAKE YOUR WEDDING PARTY UP A NOTCH WITH THE ULTIMATE AFTERPARTY AT HUSH AND SHARE A TOAST TO YOUR HAPPILY EVER AFTER WITH A NIGHT TO REMEMBER.

WITH ITS RICH INTERIOR, CREATIVE COCKTAILS AND STATE-OF-THE-ART AUDIO-VISUAL SYSTEMS, THIS DINNERTAINMENT VENUE IS WITHOUT A DOUBT THE AFTERPARTY VENUE OF CHOICE.



styling

WITH AN INVENTORY OF OVER 1000 WEDDING PROPS AND A TEAM OF CREATIVE IN-HOUSE FLORISTS AND VENUE STYLISTS, YOU CAN COUNT ON US TO SPRUCE THINGS UP!



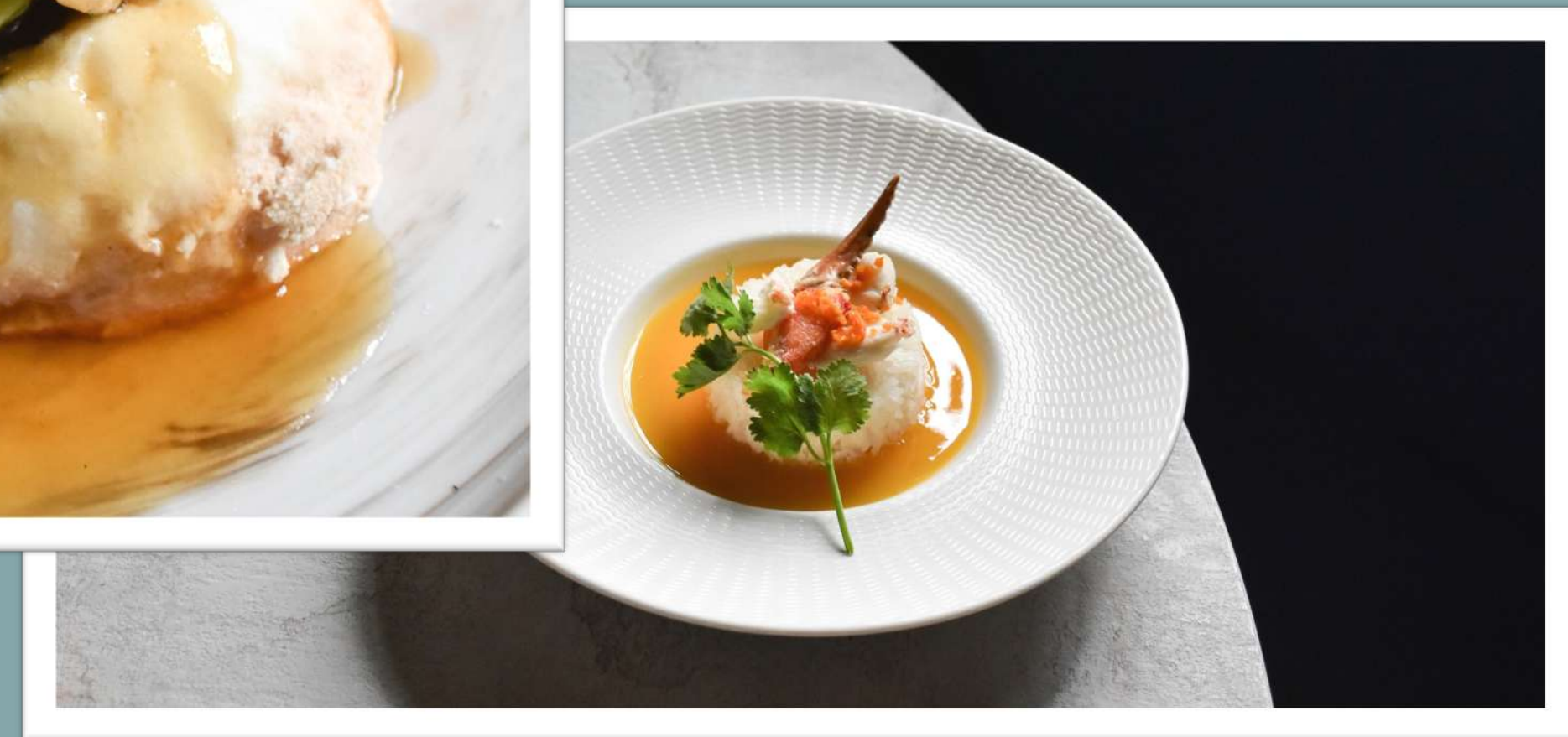
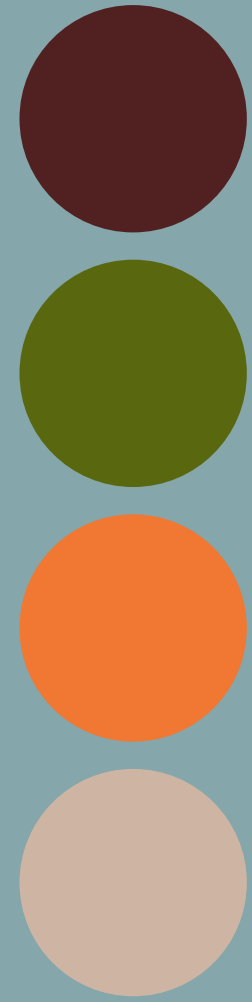
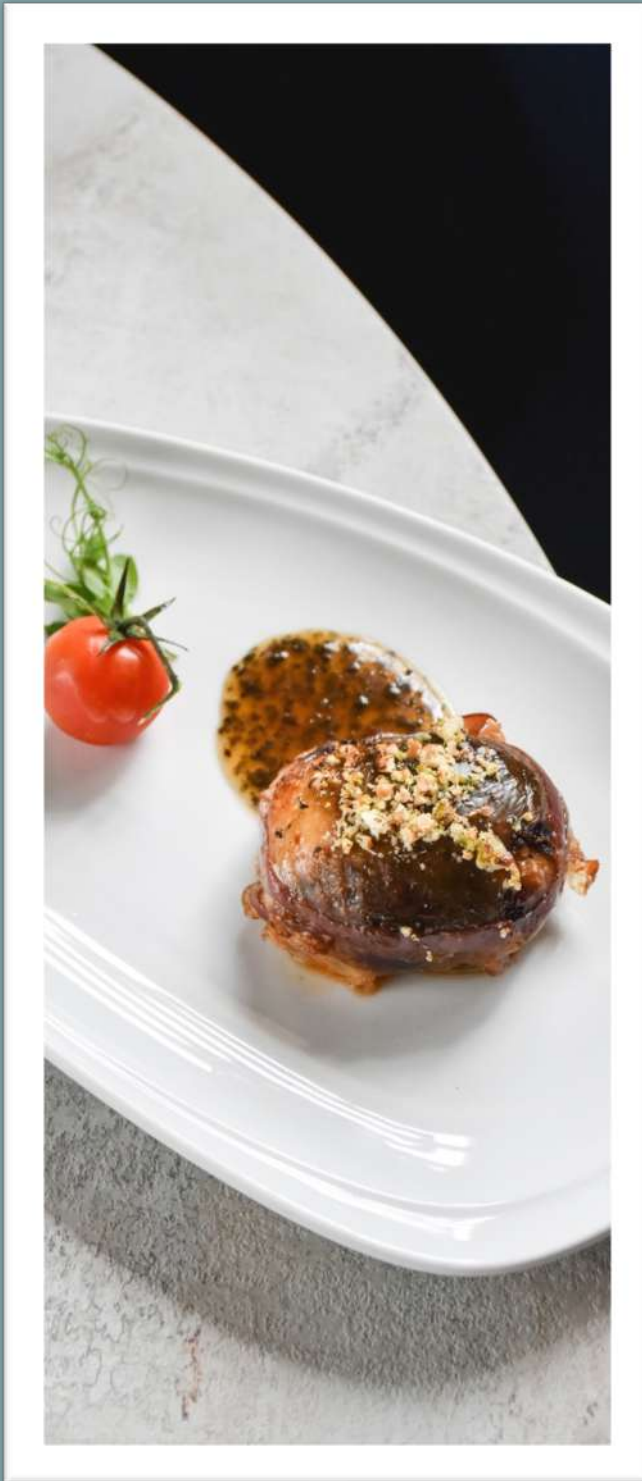
Photographer: @wemerryground



modern chinese cuisine

A MELODIOUS BLEND OF TRADITION AND MODERNITY, MIMI FUSES INTRIGUING FLAVORS FROM SICHUAN, SHANGHAI AND MONGOLIA WITH CONTEMPORARY COOKING TECHNIQUES AND DISTINCTIVE PRESENTATIONS TO CREATE AN ENGAGING DINING EXPERIENCE.

cuisine



fact sheet

LOCATION & HOURS

3A RIVER VALLEY ROAD, #01-02, SINGAPORE 179020

HOW TO GET HERE

Train

*NE5 CLARKE QUAY MRT STATION
DT20 FORT CANNING MRT STATION*

Bus

*BEF FORT CANNING STATION (B04331)
CLARKE QUAY (B04211)*

CAPACITY

*SEATED FOR MIMI: UP TO 250 PAX
STANDING : UP TO 500 PAX
SEATED FOR YIN & YANG: UP TO 250 PAX
STANDING : UP TO 700 PAX*

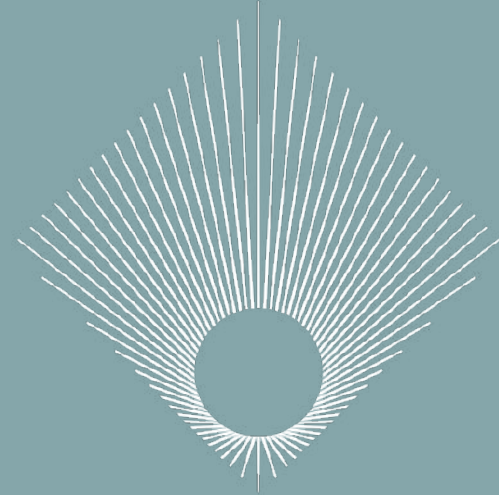
FACILITIES

FULL-SERVICE BAR, BRIDAL ROOM, AV EQUIPMENT, PROJECTOR & SCREEN, LIVE FEED SERVICE

THE FOLLOWING ARE ITEMS FROM THIRD-PARTY VENDORS WHICH WE CAN ARRANGE ON YOUR BEHALF

DJs, LIVE BANDS, EMCEES, WEDDING FAVOURS, INVITATION CARDS, CAKES, FLORAL DECOR





THE RIVERHOUSE
M D C C C L X X

3A RIVER VALLEY ROAD
#01-02
SINGAPORE 179020

ENQUIRIES@THERIVERHOUSE.SG
+65 6261 1189

BUILT IN THE 1870S ALONG THE BANKS OF CLARKE QUAY, THE RIVERHOUSE BEGAN LIFE AS A THRIVING "SECRET SOCIETY" HOUSE HELMED BY SEVERAL HEADMEN OF THE NOTORIOUS GHEE HOK SOCIETY. THE SAME VIBRANCY CONTINUES TO LIVE TODAY IN THIS TWO-STOREY MULTI-CONCEPT SPACE HOUSING A MODERN CHINESE RESTAURANT, ALFRESCO BAR AND WORLD-CLASS NIGHTCLUB – NAMELY MIMI, YIN AND YANG.



Photographer: @wemerryground